
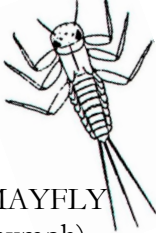
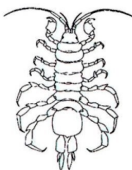
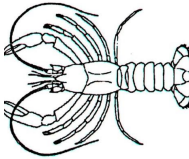

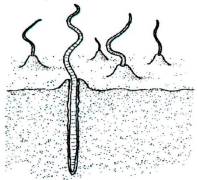


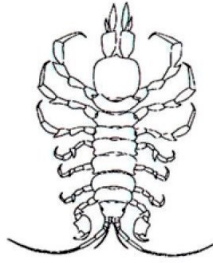


MACROINVERTEBRATES SHAKE & ROLL

Help us "collect" aquatic macroinvertebrates to find out if the water is polluted or not. Build the dice by cutting it out and gluing it together. Then shake and roll the dice at least 20 times to find out which water bug you get in our "water sample". Some water bugs don't tolerate pollution and only live in good quality water like the caddisfly and mayfly. Others can tolerate a wide range of water conditions (crayfish and sowbug) and some can handle poor water quality like the midge and aquatic worm.

10						
9						
8						
7						
6						
5						
4						
3						
2						
1						
	 CADDISFLY (larva)	 MAYFLY (nymph)	 SOWBUG	 CRAYFISH	 MIDGE (larva)	 AQUATIC WORM
Good water quality/Low pollution tolerance ---> Poor water quality/High pollution tolerance						

SOWBUG

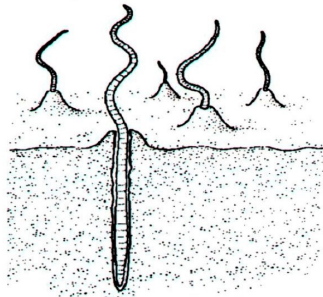
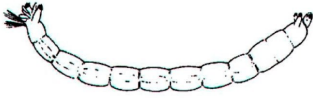


glue

glue

glue

MIDGE
(larva)



AQUATIC WORM

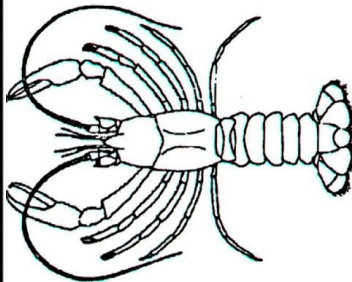
CADDISFLY
(larva)



glue

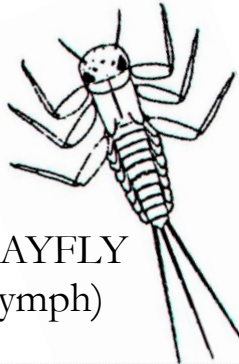
glue

glue



CRAYFISH

MAYFLY
(nymph)



glue