



Help the Animals Find a Bed for Winter!



The winters in Bucks County, Pennsylvania can be long and cold. If you take a walk through one of the Heritage Conservancy properties during the winter you might miss seeing some of the usual woodland creatures. Have you ever wondered where the animals go in the winter? Where are they hiding?



Listen to the story *A Bed for the Winter*. The animals in the story are all looking for a place to be safe and sleep for the winter. Not all of the animals in this story can be found in our area, but there are many that do find their winter "bed" in the Bucks County woodlands. After you have heard the story, challenge yourself to see how much you learned by playing the game ***Put the Animals to Bed!***





Put The Animals To Bed!

a matching game



Items needed to play:

2 gameboards

2 sets of game cards

1 die

Directions:



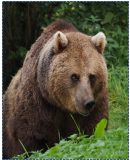
Listen to the story *A Bed for the Winter*.



Print 2 gameboards and 2 sets of game cards.



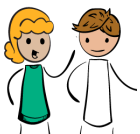
Cut out the game cards. There will be 16 cards for each player.



Mix up your game cards and lay them face down in front of you.



Player 1 rolls the die. If you roll a number 1 on the die, turn over 2 game cards, to try and find a match. A match is when an animal picture matches a picture of the correct "bed" that animal needs for winter in the story. Stack your matching cards on top of a bed on your game board. If you roll a different number, or do not find a match, it is the other player's turn.



Player 2 follows the same directions. Continue to take turns.

The first player to fill all of the beds on their game board with matches, wins!



Put the Animals to Bed

Game board



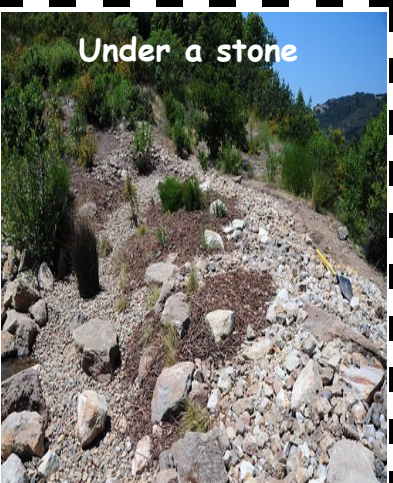
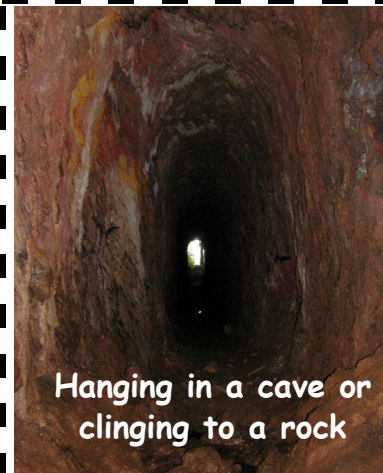
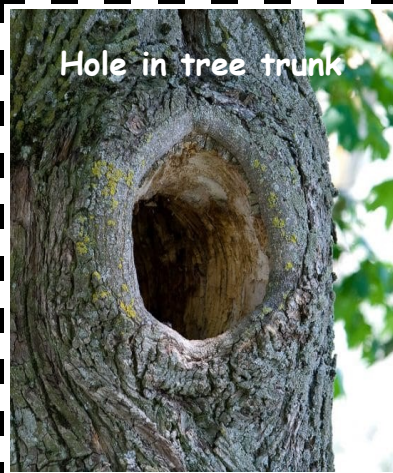
Put the Animals to Bed

Animal game cards



Put the Animals to Bed

Winter bed game cards



Put the Animals to Bed

A matching game answer key

