



Kids!

THE CHILDREN'S NEWSLETTER OF HERITAGE CONSERVANCY

Winter 2020

Some of the oldest buildings in our country

are located right here in this area. Along with preserving land, Heritage Conservancy preserves historic buildings because it is important to recognize and protect our region's architectural history.

For example, farming is a big part of Bucks County's history, so we have many old farmhouses and barns that represent that history. Other parts of the country don't have these old buildings. They are unique to this area, and we need to make sure we treasure and save them before they're all gone!

In this newsletter, you will read about one of our favorite old buildings in this area and activities that you can do to connect to the historic structures of the past.

Whose House Is This Anyway?

An important part of historic home preservation is learning the history of the building. Create a history for your own home, new or old, by photographing or drawing your house and writing down its story. This is a great opportunity to learn more about the place you live!

Some things to consider when learning about your home's history:

- When was it built?
- Who was it built by?
- How long has your family lived there?
- Has anyone lived there before you?
- What kind of materials is your house made of?
- What is the layout?
- Does your house have any interesting features?



You can also try this project with other buildings in your area! Send us your findings at info@heritageconservancy.org.

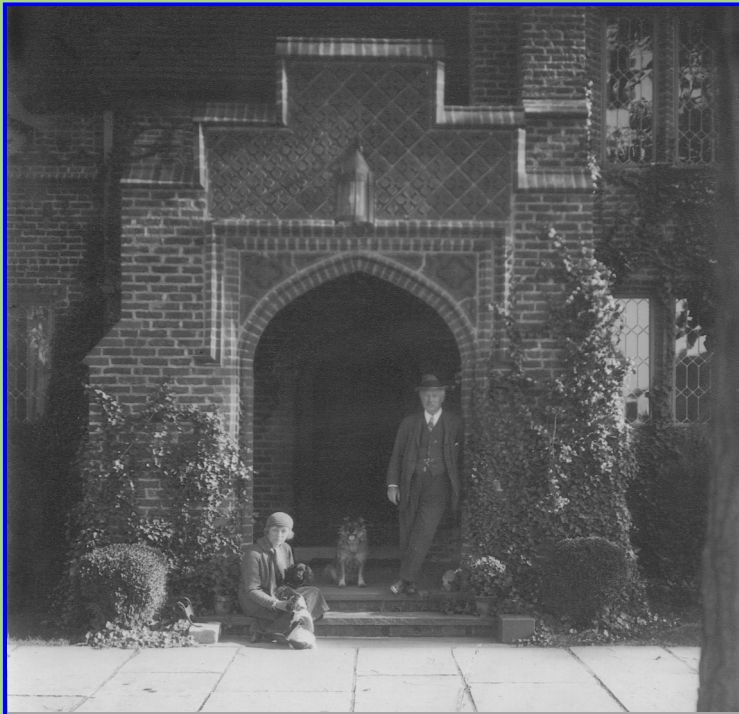
This newsletter is sponsored by

To preserve and protect our natural and historic heritage



Aldie Mansion

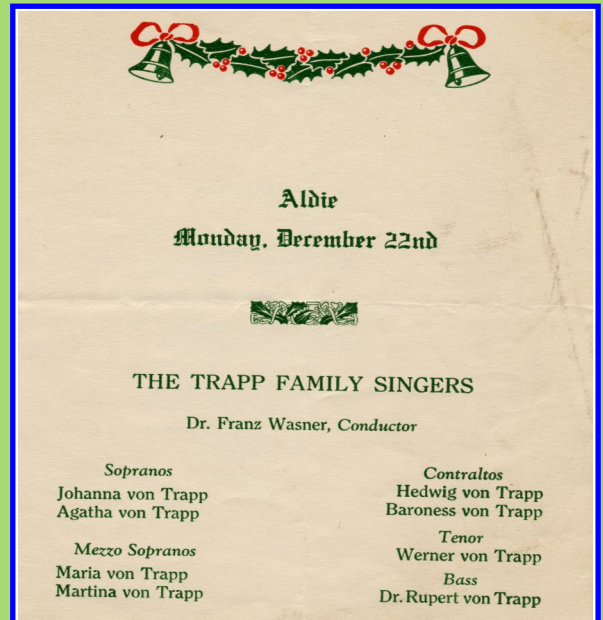
Have you ever seen the big mansion on Old Dublin Pike in Doylestown and wondered what it is? That's Aldie Mansion, and it is home to Heritage Conservancy! Aldie Mansion was built in 1927. With its pretty brickwork, colorful leaded glass windows, gargoyles and concrete sculptures, Aldie Mansion is like a fancy English manor house right in Bucks County!




Here is a photo of William and Martha Mercer in the front of Aldie Mansion. They loved their pets! They even had peacocks as pets.

William and Martha Mercer had lots of friends both in Bucks County and around the world, and Aldie Mansion was the scene of many gatherings and parties. Those friends included Groucho Marx, a famous actor and comedian from the 1930s, and the von Trapp family, the singing family from *The Sound of Music* movie.

The original owners of Aldie Mansion were William and Martha Mercer. William was the younger brother of Henry Mercer, whose name you might recognize from Fonthill Castle, Moravian Tile Works, and the Mercer Museum. Just like Henry, William was artistic; he created a lot of the concrete sculptures that you can still see today at Aldie Mansion.



Aldie
Monday, December 22nd



THE TRAPP FAMILY SINGERS
Dr. Franz Wasner, *Conductor*

<i>Sopranos</i>	<i>Contraltos</i>
Johanna von Trapp	Hedwig von Trapp
Agatha von Trapp	Baroness von Trapp
<i>Mezzo Sopranos</i>	<i>Tenor</i>
Maria von Trapp	Werner von Trapp
Martina von Trapp	<i>Bass</i>
	Dr. Rupert von Trapp

This program is from when the Mercers had a special performance by the von Trapp family during a Christmas party at Aldie Mansion in the early 1940s. The von Trapps caroled from the balcony in the Great Hall.

Sadly, after Martha died in 1960, Aldie Mansion was sold and none of the owners really took care of it. By the mid-1970s, nobody lived there. Aldie Mansion was in bad shape and the grounds were overgrown. Strangers began to damage the house. People even stole William's concrete sculptures and broke the pretty glass windows in the house!

Luckily, in 1987, Heritage Conservancy was given the chance to purchase Aldie Mansion and its grounds. With the help and support of this community,

Heritage Conservancy repaired and restored Aldie Mansion to its former beauty! It now serves as the headquarters for the Conservancy, and people once again can use this beautiful landmark house for weddings, parties, and other gatherings. And you too can come to take a tour of Aldie Mansion with your classmates or your parents!



This is a photo of Aldie Mansion when it became neglected and wasn't cared for. Heritage Conservancy and this community helped to save it!

Architectural Dice and Drawing Game

Queen Anne, Craftsman, Art Deco...these are all different home styles that you might find in this area. Our historic homes are like pieces of a puzzle that fit together to tell a story about our communities. Many historic neighborhoods were built in different architectural styles that provide us with stories about when people settled in an area and where they worked, worshipped and educated their children.

	1	2	3	4	5	6
	 Gothic Revival	 Second Empire	 Queen Anne	 Tudor	 Craftsman	 Art Deco/Modern
1st turn/ House Body (basic shape)	 Asymmetric	 Square	 Asymmetric	 Rectangle	 Square	 Square
2nd turn/ Roof (what shape is it)	 Steep Pitched	 Mansard	 Cross Gables	 Steep Pitch Gabled	 Low Pitched	 Flat Roof
3rd turn/ Windows (shape & trim)	 Bay Window	 Ornate Trim	 Decorative Panes	 Small Pane Casement	 Single Pane in Bottom Sash	 Stained Glass
4th turn/ Door (shape & trim)	 Door with Ornate Arch	 Paired Doors w/ Transom	 Paired Doors w/ Stained Glass	 Wood Plank	 Sidelights with Paneled Door	 Etched Doors
5th turn/ Materials	 Wood Frame	 Brick	 Shingles	 Stucco	 Clapboard	 Smooth Stucco
6th turn/ Details	 Vergeboard Trim	 Decorative Trim	 Turret	 Half-Timbering	 Porell Column	 Geometric Keystone

Visit heritageconservancy.org/resources/at-home-with-nature to watch a video to learn about architectural styles, and then test your drawing skills with an architectural art dice activity.

Connect With Nature This Winter

(Winter activity ideas from Thimbleandtwig.com)

It might be cold outside, but that doesn't mean you can't still connect with the great outdoors! Here are a few suggestions for ways that you can still enjoy time outside:

Scavenger Hunt

This activity will surely build excitement for your kids. This will help them be aware of their surroundings and fuel their curiosity to discover more about Mother Nature. To begin, you can make your own nature scavenger list. Have the kids collect different kinds of seeds, flowers, insects, or even rocks. The most interesting part of this activity is that they get to enjoy and have fun while learning about the natural world.



Outdoor Winter Scavenger Hunt



Start Geocaching

Geocaching is a great way to explore outside, and it's a great outdoor nature activity for winter. It is free, easy, fun, and outdoors and appropriate for all ages! People across the world set up hidden treasure "caches" and then upload the coordinates so that other people can find them. You can use an app on a smartphone to find them so it's a great way to lure techy kids outside!

Natural Mobiles

Take two sticks and tie them together in a cross. Hang several long bits of string down from the ends of the stick cross and add pinecones, berries, leaves or shells/ pebbles to make a beautiful mobile. Or alternatively, you could use air drying clay to make a nature mobile by pressing your nature finds into the clay.



Nature Watch

From a window in your home or while outside, you can use binoculars to see wildlife up close and personal! There aren't quite as many critters out during the winter months, but there are still plenty to observe. Keep a daily diary of which animals you spot.

Membership support makes Heritage Conservancy's mission possible. Visit HeritageConservancy.org to become a member today.

Would you like to continue receiving this newsletter? Get on our mailing list so you can keep learning more about our region's natural and historic heritage! Email us at info@heritageconservancy.org to be added to our list.