

MONTGOMERY COUNTY HISTORIC AND LAND PRESERVATION

Collaboration with community is a cornerstone of our programs.

HISTORIC PRESERVATION

Heritage Conservancy is in the process of accepting assignment to serve as the administrator of a perpetual covenant, beginning in 2033, to preserve and protect the historic structures located on the Dickinson Farmstead property in Plymouth Meeting.

Dickinson Farmstead is located in the Plymouth Meeting Historic District, which is listed on the National Register of Historic Places. The Dickinson House (c 1754) was built by Quaker settlers and is one of the oldest surviving houses in Plymouth Meeting. The Albertson House (c 1810) was built as a tenant farmhouse on the farmstead. Other historic structures on the 6.31-acre property include a stone barn, carriage house, smokehouse/privy, icehouse, and three stone walls, all preserved and protected by the covenant.



Dickinson Farmstead

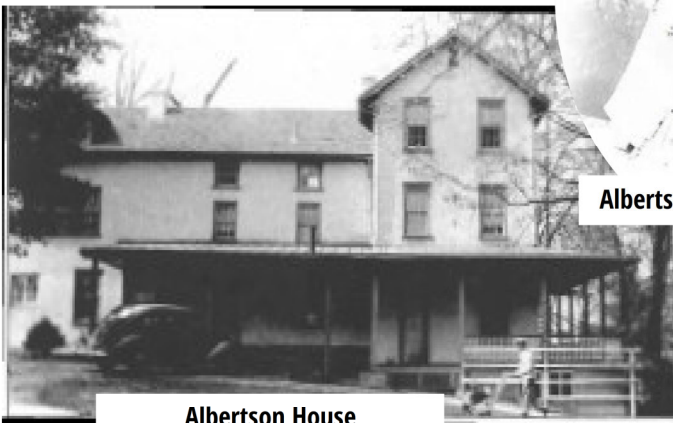
The site can be traced back to 1685, when it was granted by William Penn to Francis Rawle. It eventually came into the hands of the Dickinson family in 1716. In 1971, The Plymouth Meeting Historic District, which contains the Dickinson Farmstead, was placed on the National Register of Historic Places and both the houses and supporting outbuildings were listed as contributing resources to the historic district.

In 1979, the Plymouth Meeting Historical Society was granted care of the property until they finally purchased it in 1997.

This partnership is particularly significant, as Heritage Conservancy is one of only two remaining preservation organizations in the County, alongside the Preservation Alliance for Greater Philadelphia.



Albertson Sisters | April 1894



Albertson House



Historic Stone Barn